

A NEW VISION FOR SUPPORT ENGINEERING



EDITO

The whole eLSA team, business experts, developers, project managers... wishes you a prosperous and innovative 2020! 2019 was quite the milestone for eLSA thanks to 3 additional contracts that have been signed during year.

Our software is now operating amongst our main clients. We are proud to participate in the optimization of their support system and accompany them in the development of new processes.

Stay tuned to learn more of eLSA's development during the course of 2020 in our upcoming April issue.

In the meantime, with the beginning of the internship season for our future engineers right around the corner, we decided to focus our attention toward our continuous partnership with 3 "grandes écoles" where our support experts readily share their knowledge about ILS. And perhaps a little bit about eLSA as well.

Enjoy your reading,
The eLSA Team



Thank you for your confidence and wish you a happy new year.

Contents

NEWS

- LGM, Partner of engineering schools

TECHNICAL FOCUS

- LGM at the service of your systems (Infographic)

EVENTS

- eLSA's teams are getting ready for 2020
- ASD Multi Standard Training
- Aeronautic morning for LGM South : from technical requirements to operational use
- Elsa presentation during the steering committee s3000L

elsa.lgm.fr/en





LGM, PARTNER OF ENGINEERING SCHOOLS

For years LGM has been actively participating in numerous events organized by engineering schools: recruitments workshops, business forums, alumni meetings, various challenges etc....

This partnership only grew stronger over the years, especially now that LGM organizes and administrates ILS classes at IPSA and EPF.



This school trains multidisciplinary engineers with the ability to begin or continue their career in various industrial/service sectors



IPSA focal point is to train specialists in aeronautical and spatial systems over a over 5 years program.

Charles BACCIOCHNI is part of the speakers and offers ILS trainers among the EPF since 2018. This 30 hours course is aimed at 5th years students who chose the option “operation and maintenance” within the aeronautic major.

The syllabus is divided in three categories: Introduction to ILS general concepts, workshops in smaller groups addressing business processes and a more ambitious case study ending with an oral defence.

« Beyond the sessions themselves, the training is an excellent vector of visibility and recruitment for LGM. Putting students in the centre of the educational process reflects positively within the EPF. Being alumni also helps to engage the students and it is not uncommon for us to talk informally about LGM after class.. »

Charles BACCIOCHINI, Project Manager at LGM

Each of these sessions includes a theoretical and a practical part. Finding the right balance between those two aspects is primordial: the objective is to keep each student on their toes while passing a maximum of information in a limited amount of time. Multiple teaching supports are implemented throughout this course to accomplish this goal: group workshops, slides, active participation, exercises, quizz... Each student is thus stimulated to understand by themselves the multiple challenges of the profession.

On an organizational standpoint, homework is kept to the minimum as we have noticed that adding additional weight on



overloaded schedules is predictably counterproductive. Who would have thought?

Students show interest in ILS classes since this subject isn't often highlighted in schools' cursus. Most of them are curious and motivated. In spite of some youthful mistakes, it is often a willingness to do well that emerges. For LGM, the objective is to provide individual support and coaching in and outside the classroom to further their professional ambitions as well as quelling any interrogation they might have.

BUT WHAT ABOUT ELSA ?

« « The lectures do not rely on eLSA since the goal of those classes is to teach those students the whole ILS process. However, once they have learned to basics, students soon come to ask the question: "Is there a tool to drive LSA activities?". To which we can proudly answer yes, and show them our solution ! » **Maëlie PHO, project engineer at LGM.**

WHAT DO SCHOOLS THINK ABOUT IT

« *Last year students are eager to learn anything about « real » jobs, about what awaits them in mere months. LGM training is catering to their needs by giving them concrete professional practice as well as completing their already solid technical background. The proximity with the teacher, who come from the same schools, and their passion for the job, allow them to look expectantly toward the future.* »

Jean-François LEFEVRE, 5th year MPM – IPSA director

Some feedback from EFP and IPSA students

« *The quality and the content of this training were clear and exhaustive. »*

« *First of all, thank you very much. This class was very interesting and I found it to be understandable and exhaustive about processes. **Making us understand the whole picture by handing us brief case studies to solve was awesome!** »*

« *This lecture builds on a RAMS class we had last year. **I am currently doing my formation with part-time training as a service engineer at Thales and your classes allowed me to prepare for the environment of RAMS, ILS, ALS engineers etc..** Thank you for this. »*

« *Having the opportunity to talk with an IPSA alumni was interesting. »*

« *This class was the most grounded we had during this semester, which was very good because I think it tends to be lacking in the Aeronautic major (too many classic lectures without case studies). [...] I think that **if we got the ILS logic right for 50 varius items, we'll be able to emulate it for 200**, without having to actually solve that many. »*

« *It was quite original –and unexpected- to make us do a use case about a pen. It changed from what we were used to and lead us **to think differently.** »*

« *Clear explanations with different examples to understand. **An extensive overview of ILS.** »*



AND THE FORMAT WORKS!

After a renewal of courses for the 2019/2020 school year, the adventure shall continue for the next few years. Moreover, this approach will probably be extended to even more engineering schools.

CENTRALE SUPELEC ILS MASTER

LGM isn't going to stop in its track. **Frank Weiser, LGM CEO, is one of the speakers in the Program management/ Support and systems engineering Master at Centrale Supélec.**



CentraleSupélec

CentraleSupélec (the junction of École Centrale and Supélec since January 2015), trains its students in Engineering and Systems Sciences.

The eLSA Team : When did it all start?

Frank Weiser : Noticing that there was a cruel lack of in-depth skills related to professions in support and systems engineering, Supélec –with guest speakers from Thales- created this Master.

On a personal basis, I have been working for 7 years now with other LGM collaborators on 2 modules on the subject: « ILS activities in SME ». It was an opportunity to talk about Logistic Information Systems, such as eLSA, but also about the tools and the testing means.

What kind of people is targeted by this program?

This training is aimed at experienced students. While approximatively 1/3 are new graduates, 2/3 are professionals that want to evolve towards support or systems engineering professions. By the way, not all of them are engineers.

I once trained a former buyer who is now an ILS manager in an important aeronautic manufacturer.

This extensive Master, composed of 10 modules of 1 week each, is tailored for professionals from different fields, be it Defense, Aeronautic, Railway, Automobile, Energy...

All in all, about 30 speakers are involved, according to their specialties, in the different modules.

What are your 2020 objectives?

I took charge of the whole ILS Management module. I am also organizing and structuring the cursus and the teaching materials with the help of other participants coming from other companies in the industrial sector; I involve experts from Thales, Alstom, Renault and Dassault Aviation.



The module lasts for a week and is structured around lectures –ranging from 2h to a day- and case studies.

I always welcome this opportunity to present MOKA (our predictive maintenance solution), our connected tool trolleys, and of course eLSA - when I am teaching about S3000L.

I am also the ILS and System Engineering referent teacher as well as the academic tutor for 2 to 3 interns each year for their thesis.

What do you get from teaching and training?

I am happy to pass down knowledge of this field. It helps me take a step back from daily routine. 3 times a year, we organize educational meetings with the whole teaching staff to discuss the cursus and how it could be improved to follow the different evolution of the industry: predictive maintenance, IoT...

So I'm still learning too! It allows me to meet a wide array of people from pe-

dagogic staff to professionals from other sectors. We talk about the challenges we all face, such as recruiting skilled employees, training... This is why this Master was created: there weren't enough logistics specialists and systems engineers!

What is LGM will behind all of this pedagogic involvement (Centrale-Supelec, IPSA, EPF, ...)?

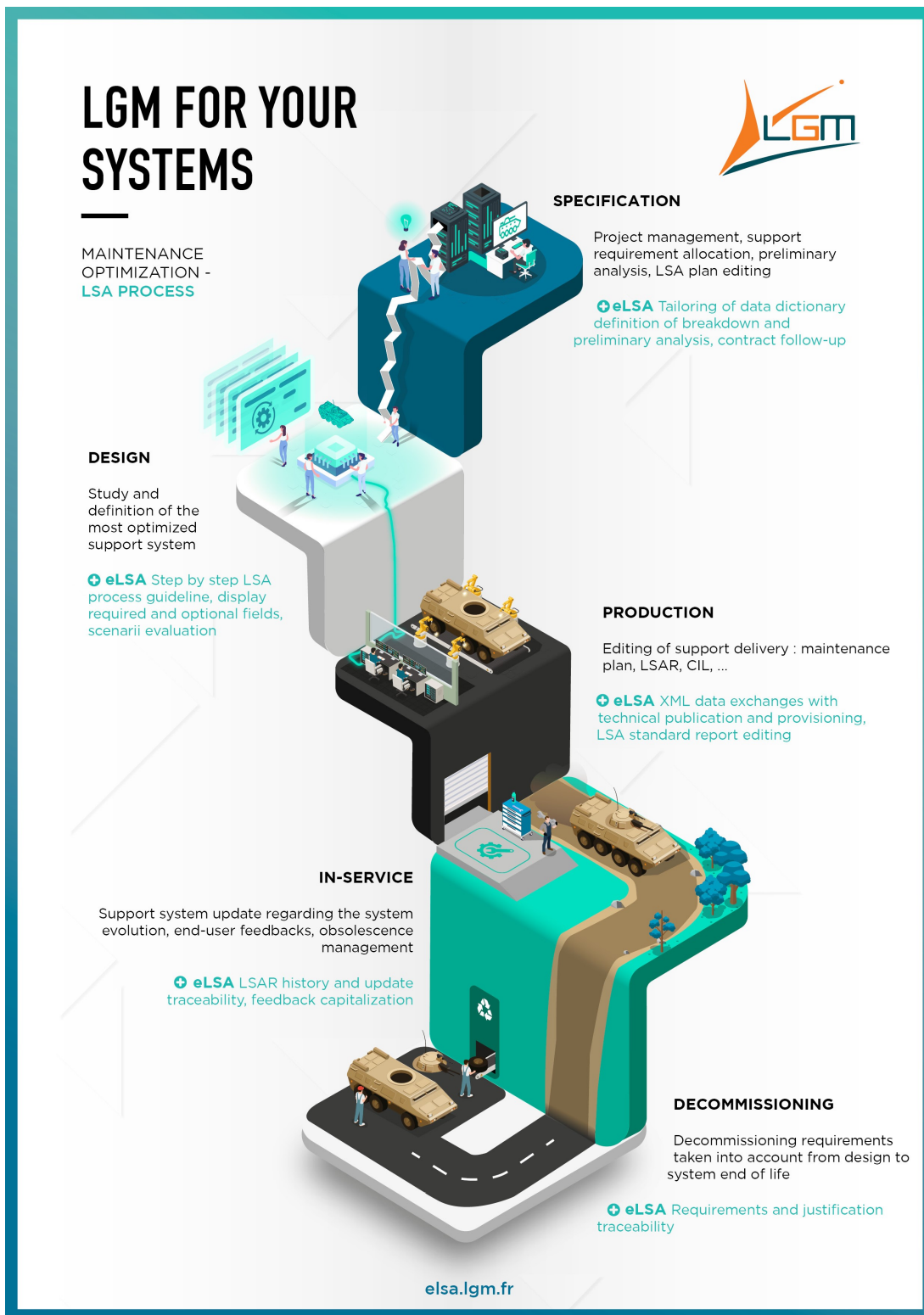
LGM Group has always encouraged any transmission of knowledge, be it internal or external. It has two positive repercussions: obviously, it shines brightly on the company's reputation and more importantly, it encourages and motivates our staff. In turn, they become instructors.

LGM AT THE SERVICE OF YOUR SYSTEMS

eLSA is a tool that brings to LSA analysts more than data management services, but will help them throughout the whole life cycle of their systems !

Thanks to this (awesome and sleek) infographic, you will learn more about each of eLSA's inputs every step of the cycle.

We shall detail in future issues eLSA's usage and benefits for each of those steps.



ELSA'S TEAMS ARE GETTING READY FOR 2020

From the 21st to the 23rd of August, Christophe le Stir, LGM's Support manager, hosted in Nantes a meeting with the support business experts as well as eLSA's Development representative.

From the corrective actions to undertake, to ergonomics, productivity, business applicability and upcoming business evolutions, eLSA's core has been thoroughly screened.

Everything was taken into account in order to prepare the teams involved in this project for its evolutions in order for eLSA to remain the S3000L leader.

ASD MULTI STANDARD TRAINING

Welcome to the decade of the S-Series!



If you are a bit lost caught in the so-called S-Series and want to have a global vision of the role and contribution of ILS in a project, we have just designed **a new training course to introduce you to all the specifications written by the ASD!**

From SX000i (#SLI) to S6000T (#Ttraining), S3000L (#ASL), S1000D (#Documentation), S2000M (#Provisionnement), S5000F (#REX) and S6000T (#Training), we offer interactive training to answer all your questions, from "What is it?" "How do I use it?" to «What is the link between each of them? ». T

his training is available in our agency or in your premises and can also involve different companies simultaneously in order to promote best practices across different fields.

What are you waiting for? Join us to discover all there is to know about S-series!

To inscribe or to get more information, please contact : lgm.academy@lgm.fr ou +33 (0)1 30 67 08 82

Catalogue de formation 2020 du Groupe LGM page 13

INTRODUCTION AU S-SERIES DES ASD

Durée : 2 jours
Lieux / Dates : Nantes contacteur
Prix HT / stagiaire : 500 euros*

OBJECTIFS
À l'issue de cette formation les stagiaires sauront :

- Quel est le but de chacune des spécifications ASD S-Series
- Quelle est la structure de chacune de ces spécifications
- Comment ces spécifications communiquent entre elles.

PROGRAMME

LA DEMARCHE SLI BASEE SUR LA S3000/STRUCTURE UNE DEMARCHE DE SPECIFICATION

L'ASL AU TRAVERS DU PROCESSUS S3000L

- Conception du produit et données importantes pour le soutien
- Présentation des Chapitres et interactions.

DEFINITION DU PROGRAMME DE MAINTIEN PREVENTIVE: LA S4000F

EXEMPLE DE MISE EN ŒUVRE S3000L

PROFIL
Pas de profil spécifique (connaissance technique de base).

PREREQUIS
Aucun.

FORMATIONS SPECIFIQUES SPECIFICATIONS ASD

ASD S1000D	DOC_01 - Spécification ASD S1000D
ASD S2000M	DOC_02 - Spécification ASD S2000M
ASD S3000L	SLI_07 - Introduction à la Spécification ASD S3000L
ASD S3000L	SLI_08 - Modèle de Données S3000L
ASD S4000F	En cours de construction Aujourd'hui : SLI_09 - Optimisation de la maintenance Préventive - HIG-3 système
ASD S5000F	ASD S5000F - Introduction à la Spécification ASD S5000F Aujourd'hui : HDR_06 - Retour d'Expérience (REX)
ASD S6000T	Disponible en avril 2020 Aujourd'hui : TRA_01 - Ingénierie de formation : Méthodologie SAT

AERONAUTIC MORNING FOR LGM SOUTH : FROM TECHNICAL REQUIREMENTS TO OPERATIONAL USE

After the success of our demonstrations and the warm feedbacks we received at last June Paris Bourget Airshow, our Aix-En-Provence agency organized a morning session focused on our expertise. **Our guests have been able to discover and participate in workshops showcasing our activities in aeronautical ILS, our workshops deployed on our ILS programs, from the conception of ILS tools, Critical safety electronical system design to the industrial efficiency and operating performance.**

eLSA has of course been showcased to the visitors that joined us that day. **They were able to discover eLSA or rediscover the latest version and its many evolutions and renew their interest in an off-the-shelf S3000L solution.** Once again, we have seen that this new standard is gaining momentum in the aeronautic and naval sectors, as well as, more surprisingly, in the energy sector.

Participants were also able to attend the conference held by Safran Aircraft Engines on systems engineering.

<https://events.lgmgroupe.fr/matinaleaeronautique2019/#>



ELSA PRESENTATION DURING THE STEERING COMMITTEE S3000L

Next March, LGM will participate in the S3000L steering committee in Kiehl, Germany.

The numerous exchanges between the members of the France group, especially around project feedback, have aroused their interest in the tooling solutions developed by LGM and will give the opportunity to Alexandre TOUCHOT ("Product Manager) to present Elsa.